

ORDINARY COUNCIL MEETING

AGENDA

23 MARCH 2016

at 4:00 PM

COPACC - Colac

Next Meeting:

27 April 2016

Apollo Bay Senior Citizens Centre, Apollo Bay



Our Vision

A sustainable community with a vibrant future.

Our Mission

Council will work with our community and partners to provide:

- Innovative leadership, good governance and financial accountability
- Value for money, accessible and appropriately targeted services
- A strong advocacy and engagement approach to achieve a truly liveable community

Our Values

Council will achieve its Vision and Mission by acting with:

- Respect
- Integrity
- Goodwill
- Honesty
- Trust

Our Strategic Direction

The four pillars of our Council Plan indicate our key strategic direction for 2013-2017.

An underlying principle in the development of the Council Plan was to more effectively integrate service delivery.

Pillar 1: Good Governance

Pillar 2: A Planned Future

Pillar 3: A Place to Live and Grow

Pillar 4: A Healthy Community and Environment

Our Councillors

Cr Frank Buchanan (Mayor), Cr Brian Crook, Cr Michael Delahunty, Cr Stephen Hart, Cr Lyn Russell, Cr Chris Smith, Cr Terry Woodcroft (Deputy Mayor).



Ordinary Meeting of Council

Welcome

Welcome to this Meeting of the Colac Otway Shire Council

Council Meetings are an important way to ensure that your democratically elected representatives are working for you in a fair and transparent way. They also allow the public to be involved in the decision making process of Council

About this meeting

There are a few things to know about tonight's meeting. The agenda itemizes all the different parts to the meeting. Some of the items are administrative and are required by law. In the agenda you will also find a list of all the items to be discussed this evening.

Each report is written by a Council officer outlining the purpose of the report, all relevant information and a recommendation. Council will consider the report and either accept the recommendation or make amendments to it. All decisions of Council are adopted if they receive a majority vote from the Councillors present at the meeting.

In accordance with Local Law 4, agenda items will be considered as follows:

- The item is introduced by the Mayor and Councillors are invited to ask questions of relevant officers
- A mover and a seconder of a motion is called for and if there is any Councillor who wishes to oppose the motion.
- The mover will then be invited to speak to the motion, followed by the seconder and then, if required, the Councillor who opposed the motion.
- Remaining Councillors will be given the opportunity to speak for or against the motion.
- If any Councillor speaks against the motion, the mover will be given the right of reply.
- There will be no further discussion of the item once the vote has been declared.

Public Question Time

Provision is made at the beginning of the meeting for general question time from members of the public. Matters relating to routine Council works should be taken up with Council's Customer Assist Staff.

Up to thirty minutes may be provided for Question Time. This is at the discretion of the Mayor.

Residents are encouraged to lodge questions in advance so that a more complete response can be given.

Questions can be submitted in writing up until 5.00pm on the Monday prior to each Council meeting. There is also provision for questions to be asked from the gallery. If you would like to ask a question during Question Time, it would be appreciated if you could please fill in the blue "Public Question Time – Council Meetings" form located in the meeting rooms and hand to the COPACC Duty Supervisor.

Questions relating to a topic on the agenda may be taken on notice and responded to after the meeting. Responses to questions taken on notice will be tabled at the following meeting and included in the minutes of that meeting.

Hearing of Submissions

Any person who has made a written submission on an item and requested that she or he be heard in support of that written submission pursuant to section 223 of the *Local Government Act 1989* will be entitled to address Council.

When the relevant item is listed for discussion, the Mayor/Chairperson will call your name and ask you to address the Council. The length of time available to each speaker is five minutes.

Recording of Meetings

All Council and Committee meetings are audio recorded, with the exception of matters identified as confidential items in the Agenda. This includes the public participation sections of the meetings. Audio recordings of meetings are taken to facilitate the preparation of the minutes of open Council and Committee meetings and to ensure their accuracy. In some circumstances a recording will be disclosed to a third party. Those circumstances include, but are not limited to, circumstances, such as where Council is compelled to disclose an audio recording because it is required by law, such as the Freedom of Information Act 1982, or by court order, warrant, or subpoena or to assist in an investigation undertaken by the Ombudsman or the Independent Broad-based Anti-corruption Commission.

Council will not use or disclose the recordings for any other purpose. It is an offence to make an unauthorised recording of the meeting.

COLAC-OTWAY SHIRE COUNCIL MEETING

23 MARCH 2016

TABLE OF CONTENTS

OM162303-1	PLANNING SCHEME AMENDMENT C85 - REZONING OF LAND AT PART OF 15 FACTORY ROAD IN COROROOKE	9
OM162303-2	EARLY YEARS PLAN 2015-2017.....	15
OM162303-3	LAKE COLAC FORESHORE MASTER PLAN.....	47
OM162303-4	COLAC TOWNSHIP - ECONOMIC DEVELOPMENT, COMMERCIAL AND INDUSTRIAL LAND USE STRATEGY AND PLANNING SCHEME AMENDMENT C86	119
OM162303-5	FESTIVAL AND EVENTS SUPPORT SCHEME 2016-2017 - APOLLO BAY AUSTRALIA DAY COMMUNITY PICNIC, APOLLO BAY SEAFOOD FESTIVAL AND GREAT OCEAN ROAD MARATHON	287
OM162303-6	FESTIVAL AND EVENTS SUPPORT SCHEME 2016-2017 - COLAC KANA FESTIVAL.....	307
OM162303-7	FESTIVAL AND EVENTS SUPPORT SCHEME 2016-2017 - GELLIBRAND BLUES & BLUEBERRY FESTIVAL	327
OM162303-8	FESTIVAL AND EVENTS SUPPORT SCHEME 2016-2017 - HUNT FOR THE GOLDEN GUMBOOT.....	347
OM162303-9	FESTIVAL AND EVENTS SUPPORT SCHEME 2016-2017 - OTHER EVENTS.....	367
OM162303-10	ITEM FOR SIGNING AND SEALING - TRANSFER OF LAND - COROROOKE PUBLIC OPEN SPACE	387
OM162303-11	REVISED DELEGATIONS FOR S86 COMMITTEES OF MANAGEMENT	399
OM162303-12	ELECTION PERIOD POLICY	405
OM162303-13	CONTRACT 1601 - RETAIL ELECTRICITY, NATURAL GAS AND ASSOCIATED SERVICES (PROCUREMENT AUSTRALIA REF 1906/0625)	419
OM162303-14	UPDATE INSTRUMENT OF DELEGATION - COUNCIL TO COUNCIL STAFF	423
OM162303-15	ASSEMBLY OF COUNCILLORS.....	527
OM162303-16	AUDIT COMMITTEE SUMMARY MINUTES 20160302.....	551
OM162303-17	NOTICE OF MOTION - VICROADS BARONGAROOK CREEK BRIDGE.....	567
OM162303-18	NOTICE OF MOTION - FORMER CEO REPORT	569
OM162303-19	NOTICE OF MOTION - INSTALLATION OF TRAFFIC LIGHTS - INTERSECTION MURRAY AND ARMSTRONG STREETS	571

COLAC OTWAY SHIRE COUNCIL ORDINARY MEETING OF COUNCIL

NOTICE is hereby given that the next **ORDINARY COUNCIL MEETING OF THE COLAC-OTWAY SHIRE COUNCIL** will be held in COPACC - Colac on 23 March 2016 at 4.00pm.

1. OPENING PRAYER

*Almighty God, we seek your
blessing and guidance in our
deliberations on behalf of the
people of the Colac Otway Shire.
Enable this Council's decisions to be
those that contribute to the true
welfare and betterment of our community.
AMEN*

2. APOLOGIES

3. DECLARATION OF INTEREST

Pursuant to Sections 77, 78 and 79 of the Local Government Act 1989, direct and indirect conflict of interest must be declared prior to debate on specific items within the agenda; or in writing to the Chief Executive Officer before the meeting. Declaration of indirect interests must also include the classification of the interest (in circumstances where a Councillor has made a Declaration in writing, the classification of the interest must still be declared at the meeting), ie:

- a) direct financial interest
- b) indirect interest by close association
- c) indirect interest that is an indirect financial interest
- d) indirect interest because of conflicting duties
- e) indirect interest because of receipt of an applicable gift
- f) indirect interest as a consequence of becoming an interested party
- g) indirect interest as a result of impact on residential amenity
- h) conflicting personal interest.

A Councillor who has declared a conflict of interest, must leave the meeting and remain outside the room while the matter is being considered, or any vote is taken.

Councillors are also encouraged to declare circumstances where there may be a perceived conflict of interest.

4. WELCOME & ACKNOWLEDGEMENT OF COUNTRY

Colac Otway Shire acknowledges the traditional custodians and law makers of this land, their elders past and present and welcomes any descendants here today.

Colac Otway Shire encourages community input and participation in Council decisions. Council meetings provide an opportunity for the community to ask Council questions, either verbally at the meeting or in writing.

Please note that Council may not be able to answer some questions at the meeting. These will be answered later.

Council meetings enable Councillors to debate matters prior to decisions being made. I ask that we all behave in a courteous manner.

All Council and Committee meetings are audio recorded, with the exception of matters identified as confidential items in the Agenda. This includes the public participation sections of the meetings.

Audio recordings of meetings are taken to facilitate the preparation of the minutes of open Council and Committee meetings and to ensure their accuracy.

In some circumstances a recording will be disclosed to a third party. Those circumstances include, but are not limited to, circumstances, such as where Council is compelled to disclose an audio recording because it is required by law, such as the Freedom of Information Act 1982, or by court order, warrant, or subpoena or to assist in an investigation undertaken by the Ombudsman or the Independent Broad-based Anti-corruption Commission.

Council will not use or disclose the recordings for any other purpose. It is an offence to make an unauthorised recording of the meeting.

5. QUESTION TIME

A maximum of 30 minutes is allowed for question time. To ensure that each member of the gallery has the opportunity to ask questions, it may be necessary to allow a maximum of two questions from each person in the first instance. Once everyone has had an opportunity to ask their initial questions, and if time permits, the Mayor will invite further questions.

Please remember, you must ask a question. If you do not ask a question you will be asked to sit down and the next person will be invited to ask a question. Question time is not a forum for public debate or statements.

1. Questions received in writing prior to the meeting (subject to attendance and time),
2. Questions from the floor.

6. TABLING OF RESPONSES TO QUESTIONS TAKEN ON NOTICE AT PREVIOUS MEETINGS

These responses will not be read out but will be included in the minutes of this meeting.

7. PETITIONS/JOINT LETTERS (if required)

8. CONFIRMATION OF MINUTES

As per Governance Local Law No 4, clause 34:

- **Ordinary Council Meeting held on the 24/02/16.**

Recommendation

That Council confirm the above minutes.

34. Objection to Confirmation of Minutes

- (1) If a Councillor is dissatisfied with the accuracy of the minutes, then he or she must:
 - (a) state the item or items with which he or she is dissatisfied; and
 - (b) propose a motion clearly outlining the alternative wording to amend the minutes.
- (2) Except where sub-clause (1) applies, no vote shall be recorded against a motion to adopt the minutes.

**OM162303-1 PLANNING SCHEME AMENDMENT C85 - REZONING OF LAND AT
PART OF 15 FACTORY ROAD IN COROROOKE**

AUTHOR:	Geoffrey Alexander	ENDORSED:	Brydon King
DEPARTMENT:	Development & Community Services	FILE REF:	F15/11652

Purpose

To consider the adoption of Amendment C85 to rezone a 1.066ha area of the former Fonterra Factory site in Cororooke, from the Township Zone to the Public Park and Recreation Zone and submits Amendment 85 to the Minister for Planning for approval.

Declaration of Interests

No officer declared an interest under the *Local Government Act 1989* in the preparation of this report.

Background

Following the announcement by Fonterra in 2012 to close its Cororooke milk factory site, an approach was made to Council from the community seeking a donation of land from Fonterra for use as public open space.

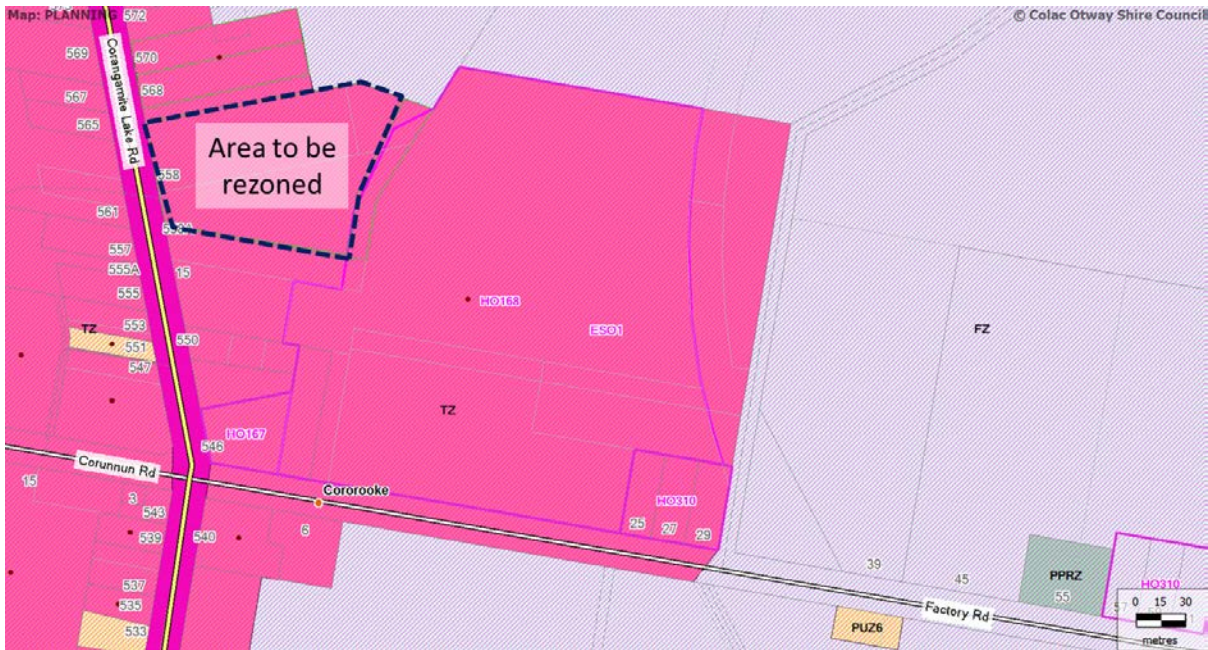
The Colac Otway Public Open Space Strategy (POSS) identifies a lack of usable open space in Cororooke and Coragulac and the need for centrally located open space with appropriate community facilities such as a neighbourhood park with a playground.

Fonterra has since agreed to donate a 1.066ha parcel of land situated on Corangamite Lake Road, Cororooke. The land in question comprises a vacant block that has been used from time to time for cattle grazing.

Subsequent to Fonterra's commitment to donate the land, Council officers worked with the Red Rock District Progress Association (RRDPA), the Cororooke Tennis Club, as well as the broader community to prepare a landscape master plan for the site. Geelong based landscape architects *Mexted Rimmer* were engaged to assist in the preparation of the Landscape Master Plan. The Master Plan was endorsed by Council at its July 2015 meeting.

The former Fonterra factory site has been subdivided to create a parcel of land for the purposes of the public reserve to be donated to Council. The process of transferring the title for the future public reserve to Council is a separate matter being put to Council in this meeting and the recommendations being made in this report are subject to the successful transfer of title to Council ownership.

The area to be rezoned and converted to a reserve is depicted on the images below.



Amendment C85 applies to the area of land donated by Fonterra to Council for the purposes of a future public reserve. The amendment proposes to rezone the land from the Township Zone to the Public Parks and Recreation Zone. This is necessary to facilitate the use and development of the land its intended future purpose.

Exhibition of Amendment

At its meeting on 25 November, 2015 Council resolved to seek authorisation for the preparation of the amendment. The following recommendation was also made in relation exhibition:

“Request the State Planning Minister to use his powers under Section 20(2) of the Planning and Environment Act to exempt the Colac Otway Shire from formal notice requirements. “

Council requested and was subsequently granted an exemption from most of the notice requirements of section 19 of the *Planning and Environment Act 1987*. Council was required to exhibit the amendment for two weeks to the site owner and to the Ministers prescribed under the *Planning and Environment Act 1987*. The amendment was exhibited between the 02/02/16 to the 16/02/16 and no objections were received.

In making the request for an exemption, it is notable that significant consultation had already occurred as a part of the Master Planning process, for which the amendment is essentially a follow on process.

Council Plan / Other Strategies / Policy

A Planned Future

Creates an attractive shire with quality buildings and spaces, accessible travel and transport, and a community that has the services and facilities it needs now and in the future; supports a prosperous economy where trade, manufacturing and business activity flourishes.

Our Goal:

Facilitate the growth, liveability and development of the shire and encourage innovation and efficiency in the local economy.

A Place to Live and Grow

Is a community where people feel cared for and supported; where buildings and spaces facilitate creativity, social activity and enrichment of life, and people have access to gain the skills and education needed to reach their potential.

Our Goal:

Improve access to buildings, spaces, services and education to support and enable quality of life.

Specifically, this issue relates directly to the following Key Strategic Activity stated in Pillar 3 – “Staged implementation of the Open Space Strategy.”

Issues / Options

The current zone (Township Zone) does not align with the intended use of the land for public open space, and would require Council to issue itself with a planning permit for use, as well as development (in cases that works exceed the value of 1 million dollars). The proposed zone for the land (Public Park and Recreation Zone) is the zone generally applied to public parks and reserves throughout the municipality, and would generally allow public use of the land without planning permit requirements. The rezoning will support open space development within the township and presents positive reuse of part of the land.

The amendment has been exhibited and it is now considered appropriate to adopt the amendment. If Council resolves to adopt Amendment C85, it must submit the amendment to the Minister for Planning for approval. If Council resolves to abandon the Amendment, it must notify the Minister of its decision.

Proposal

It is recommended that Council adopts Amendment C85, to rezone land donated to Council to the Public Park and Recreation Zone, and authorizes Council officers to submit the amendment to the Minister for Planning for approval.

Financial and Other Resource Implications

There are some costs associated with the processing of the Amendment application which will be accommodated within the current Strategic Planning operational budget.

Risk Management & Compliance Issues

There are no obvious risks arising from the amendment. The risk to Council of not proceeding with the Amendment is that it would not facilitate the orderly planning and development of the site for public open space, and would result in unnecessary planning permit requirements.

Environmental and Climate Change Considerations

There are no direct environmental or climate change considerations associated with the Amendment.

Community Engagement

The community engagement strategy follows the recommendations of the Colac Otway Shire Council Community Engagement Policy of July 2013, which details five levels of engagement – inform, consult, involve, collaborate and empower.

The method selected would be inform. Should Council agree to rezone the land, the community will be informed of the decision. Extensive consultation and involvement with the community occurred as part of the development of the Cororooke Open Space Master Plan process, the amendment is a follow on process to assist with the implementation of the Plan.

Implementation

Planning Scheme Amendment C85 has been prepared and exhibited. Before the amendment can have legal effect, it must be adopted by Council and approved by the Minister for Planning.

Conclusion

Amendment C85 is required to rezone a 1.066ha portion of former industrial land associated with the Cororooke milk factory from the Township Zone (TZ) to the Public Park and Recreation Zone (PPRZ).

The adopted Colac Otway Public Open Space Strategy (POSS) has previously identified a lack of usable open space in Cororooke. Council has recently prepared the Cororooke Open Space Master Plan, for which Amendment C85 is a follow on process.

The amendment has been exhibited and no submissions were received. It is recommended that the amendment be adopted by Council and submitted to the Minister for approval.

Attachments

Nil

Recommendation(s)

That Council:

- 1. Subject to the successful transfer of title for the land identified for rezoning in the maps contained in the background section of this report, and Pursuant to section 29 of the Planning and Environment Act 1987, adopt Amendment C85 without changes.***

- 2. Subject to the successful transfer of title for the land identified for rezoning in the maps contained in the background section of this report, and pursuant to section 31 of the Planning and Environment Act 1987, submit the adopted Amendment 85, together with the prescribed information, to the Minister for Planning for approval.***

~~~~~



**OM162303-2 EARLY YEARS PLAN 2015-2017**

|             |                                  |           |             |
|-------------|----------------------------------|-----------|-------------|
| AUTHOR:     | Greg Fletcher                    | ENDORSED: | Brydon King |
| DEPARTMENT: | Development & Community Services | FILE REF: | F13/9681    |

**Purpose**

To seek Council support to release the draft Early Years Plan for public exhibition for a six week period.

**Declaration of Interests**

No officer declared an interest under the *Local Government Act 1989* in the preparation of this report.

**Background**

Over many decades Council has been involved in supporting the health and wellbeing; and the development of young children and their families through services such as maternal and child health, immunisations, and family day care. Council is also the owner of a number of early years facilities such as kindergartens and maternal and child health centres. There are numerous Council facilities including libraries, fitness and leisure centres, parks, playgrounds and open spaces which are used by families and early years services in multiple ways.

Over the past 4 years there has been significant focus towards the development of early years services and facilities. This work has been in partnership with a number of organisations involved in the Advancing Country Towns – Better Early Years and Family Services project that finished in July 2015 including the Colac Otway & Corangamite Child and Family Services Alliance; and the Colac & Southern Otway's KEYS (Kids Early Years Services) network.

The preparation of an Early Years Plan is referred to in the Colac Otway Shire Public Health & Well Being Plan 2013-17 and has been supported by the partnerships formed during the ACT work. The draft Early Years Plan presented for consideration recognises these partnerships and the importance of evidence-led integrated early years services to support new families and especially those that are vulnerable or disadvantaged.

On a strategic level Council is involved in consultation and planning with other service providers for improvements to meet local needs; and advocating/negotiating for locally provided services, facilities and environments to meet community needs. With the introduction of local government rate-capping Council will also need carefully to consider and articulate its position in relation to early years service provision in the future.

**Council Plan / Other Strategies / Policy****A Place to Live and Grow**

Is a community where people feel cared for and supported; where buildings and spaces facilitate creativity, social activity and enrichment of life, and people have access to gain the skills and education needed to reach their potential.

*Our Goal:*

Improve access to buildings, spaces, services and education to support and enable quality of life.

**Issues / Options**

The draft Plan sets a strategic direction for planning and improving early years services, facilities and environments in Colac Otway Shire for the next 2 years. The Plan is for 2 years to allow further opportunity for Council to look at opportunities in Early Years in future changing environments. The draft Plan focuses on the collaboration and integration of traditional early years services and activities for children 0-6 years of age and their families. There is a recognition and understanding of our vulnerable and disadvantaged families and the importance of earlier interventions to support families to provide the best possible start for their children.

The development of the draft Plan has had considerable input from families, service users, service providers through a number of consultative process over the last few years.

Evidence shows us that there is a significant level of vulnerability of local children when reaching prep grade at primary school. There is a need to improve protective factors within families and reduce the risk factors that negatively impact on a child's development. The current setting allows research and government policy to combine to outline directions for early years service improvements. Many of the strategies in the draft Plan reflect these directions in a local context.

Well-designed children's centres are among the most promising models for improving access to health and social care for families with young children, and there is emerging evidence that when appropriate outreach and engagement strategies are in place, they increase service access by vulnerable families. There are also indications that the antenatal and perinatal periods are windows of opportunity for service engagement. The draft Plan outlines what has been improved and where future improvements can be made.

It is proposed that the Plan delivers on a set of actions that reflect the work and many of the recommendations of the ACT – Better Early Years and Family Services Final Summary Report (July 2015); the current Colac Otway & Corangamite Child and Family Services Alliance; and the Colac & Southern Otway's KEYS (Kids Early Years Services) network.

**Proposal**

It is recommended that Council release the draft Early Years Plan for public exhibition for a six week period.

**Financial and Other Resource Implications**

The draft Plan is for a two year period and reflects many of the findings from the final report of the Advancing Country Towns Early Years - Better Early Years and Family Services Final Summary Report (July 2015). It is planned that this work be financed from existing resources within the Health & Community Programmes budget.

**Risk Management & Compliance Issues**

There are no significant risk management or compliance issues associated with the proposal in this report.

**Environmental and Climate Change Considerations**

There are no significant environmental issues associated with the proposal in this report.



**Community Engagement**

The community engagement strategy follows the recommendations of the Colac Otway Shire Council Community Engagement Policy of July 2013, which details five levels of engagement – inform, consult, involve, collaborate and empower.

An extensive and long-term consultation process has been underway to inform the development of the draft Early Years Plan.

As part of the Advancing Country Towns - Better Services Early Years and Families project (2012–2015) focus groups were held with seven groups of parents with children ranging in age from under 12 months to primary school age over a period of 6 weeks. These parents included parents of children with a disability or developmental delay and parents with a CALD background. In total 38 parents attended the focus groups.

Many of the local schools and early years services were consulted about issues they encountered within the early years sector. Some of their responses have been included in the draft Plan. An aggregation of responses can be found in Appendix 3 of the Ganly N. (August 2014) *Advancing Country Towns Program, Early Years Services Project Report*.

In 2013 Council's Maternal & Child Health nurses consulted with 273 people attending open and individual sessions. Further to these consultations were focus groups attended by 19 mothers and a questionnaire completed by 97 parents. Key findings were around phone reminders for appointments; further professional support; breastfeeding and sleep settling support; and social activities. Many of these recommendations have been implemented.

**Implementation**

If the proposal in this report is supported by Council the Draft Early Years Plan will be placed on public exhibition for a six week period.

A copy of the Plan will be placed on Council's website and hard copies will be placed in Council Offices along with the public libraries in Colac and Apollo Bay. A media release will be issued to highlight to the community that the Plan is on exhibition and public comment is being sought. All comments received will be carefully considered and all submissions received in writing will be provided a formal written response from Council.

**Conclusion**

Council is a lead planner and provider of early years services and facilities within the Shire. There is strong evidence of the importance of early years in a person's life and the need for integrated, family and child-centred services to increase proactive factors for all children.

**Attachments**

1. Draft Early Years Plan - 2015-2017

**Recommendation**

1. ***That Council releases the draft Early Years Plan 2015-2017 for public exhibition for a six week period.***

~~~~~




Mayor's forward



The significance of children's early years on their long term development and overall health and wellbeing is well documented. The services and environments children experience in their early years have the potential to influence their development and the abilities they will bring to adult life.

Local Government in Victoria is a significant provider of multiple services, resources and environments that are utilised by children and their families and is well placed to have an influence on the development of children.

Over the last few years Council has partnered with a number of other providers of early years services to better understand many of the positive and negative forces that can impact on a child's wellbeing and development.

The vision for the *Colac Otway Early Years Plan 2015-2017* is a seamless early years service system built around the wellbeing and development of children and the common needs of families.

To achieve this vision will require strong effective partnerships with families and other local service providers and the engagement of community to raise each child.

This plan will focus on strategic goals to deliver high quality contemporary services to meet local needs, integrated early years services, planning for the improvement of early years facilities and developing earlier interventions to support vulnerable families.

Council looks forward to putting this plan into action.

Frank Buchanan
Mayor, Colac Otway Shire Council

Contents

.....

Mayor's forward	2
What is an Early Years Plan?	4
Why are early years so important?	5
Planning for service improvement	6
Planning for facilities improvement	8
Facts and figures	11
Mapping childhood development	12
What do you say?	14
What do the early years providers say?	16
Vision, principles and goals	19
Action plan	20
References and acknowledgments	26
Glossary	27
Appendix	28

What is an Early Years Plan?

Colac Otway Shire Council has developed its *Municipal Early Years Plan 2015 - 2017*, a key strategic document which sets the direction for improving integrated services and facilities that focus on the wellbeing and development of children and the common needs of families.

This Early Years Plan sets a strategic direction for improving early years services, facilities and environments in Colac Otway Shire for the next 2 years. It focuses on the collaboration and integration of traditional early years services and activities for children 0-6 years of age and their families. There is a recognition and understanding of our vulnerable and disadvantaged families and the importance of earlier interventions to support families to provide the best possible start for their children.

Issues raised in the *Council Plan (2013-2017)* and Council's *Municipal Public Health and Wellbeing Plan (2013-2017)* have been considered in this Plan. These include:

- The need for affordable and accessible early years services and buildings that support and enable quality of life
- Reducing significant levels of disadvantage in early years
- Supporting mental health and connectedness
- Preventing violence against women and children
- Promoting gender equity and equal and respectful relationships
- Supporting healthy behaviours
- Reducing harm from alcohol, tobacco and other drugs

Actions being considered in this Plan have been developed in partnership with other early years service providers through a number of different programs, alliances and networks. All of this work focusing on better ways to support improved outcomes for young children and their families.

The references used to develop this Plan (page 26) are from local projects and research, evidence based data, and the most recent state, national and professional research documents on understanding today's young family needs. They provide information on the importance of early years planning, and future direction for early years services to meet community needs.

This Plan builds on the success of Council's previous Municipal Early Years Plan and recent projects that have been undertaken to improve outcomes for children and families. Some of these successes include:

- The *Advancing Country Towns - Better Early Years and Family Services* project had a number of early years service providers working together to plan and develop integrated research and service approaches.
- An Early Years Directory of all the services and groups has been developed and is available on Council's website.
- Barwon Child Youth & Family (formerly Glastonbury) is now providing invaluable support to the community as a cluster manager for a number of kindergartens in Colac.
- Council has introduced an SMS reminder system for appointments, partnered with other early years service providers to provide an alignment of care for families and increased breastfeeding support. These were key recommendations which have been implemented following Maternal and Child Health consultation with 273 parents and focus groups attended by 19 mothers.
- The *Let's Read* program has provided approximately packages of books to 800 families to support providing a positive early years environment for children.
- There are two networks of early years professionals within Colac Otway known as the Southern Otways and the Colac KEYS (Kids Early Years Services) networks. Their roles have been to provide support through professional development opportunities and early years networking.
- Council's Maternal and Child Health service has improved its 3.5 year participation rate by over 22% in 2014/2015.

Early years service providers have continued to introduce coordinated community based strategies that will promote early years development.

Why are early years so important?

There is academic consensus that a loving, healthy and intellectually stimulating early childhood – from infancy to kindergarten and starting school – is critical to a person’s wellbeing and success throughout their life.

The brain has the greatest capacity for change during the first three years of life making this a period of opportunity and vulnerability. It is more effective, and less costly, to support children’s development during their early years than it is to try to intervene or “fix” issues at an older age.¹

Getting it right in the early years reduces the need for remedial education and the likelihood of school failure, poor health, mental illness, welfare dependency, substance misuse and crime. It is most cost-effective to invest in early intervention that resolves issues as they emerge and are malleable, rather than responding to crisis, toxic stress and trauma, which is both more challenging and more expensive to resolve.⁵

It is important that protective factors within 0-3 years such as adequate birth weight, attachment and nurturing relationship with caregivers, material wellbeing, adequate nutrition and breastfeeding, a stimulating home learning environment, and access to health and social care are supported by early years service providers. Whilst risk factors such as low birth weight, difficult temperament, insecure attachment and harsh responses from carers, inadequate housing, low parental aspirations for a child, parental substance misuse, and toxic stress are reduced whenever possible.⁵

In the 4-5 years protective factors include self-regulation, secure attachment, cognitive skills, early mastery of skills, planning and problem solving ability, communication and language skills, positive peer relationships, material wellbeing, a stimulating home learning environment, adequate nutrition, access to health and social care, and access to high quality early learning. Risk factors include difficult temperament, insecure attachment, harsh and inconsistent discipline, poor peer relationships, toxic stress, obesity, parental substance misuse, and low parental aspirations.⁵

Planning for key transitions in a early years is the best way to support each child’s development.

At each life stage there are critical periods of susceptibility and vulnerability, as well as opportunities to build resilience and capabilities. Key transitions during a child’s early life can include child care, and the start of kindergarten and primary school.

With the importance of early years in mind, Regional Development Victoria funded a 3 year project in 2012 called *Advancing Country Towns - Better Early Years and Family Services*. There were a number of local early years service planners and providers, including Council, involved in this project. There were two key areas that were focused on.

1. It was understood that disadvantage and vulnerability were limiting the impact that core services were able to make to change the outlook for these families. What was required were:

- A better start for vulnerable children and young people
- Improved continuity of prenatal care for children
- Vulnerable children and their families are better prepared for primary school

2. Fragmented services and gaps are making it very difficult for providers to reach the most needing groups effectively. What was required were:

- A more responsive and accessible joined up services delivered out of Colac
- An improved access to services
- An increase in joined up services
- An increase in services managed out of Colac



Draft Colac Otway Shire - Early Years Plan 2015-2017 5

Planning for service improvement



Research and planning to improve early years services happens at all levels of government with input and support from the medical, academic, economic and social professions

Victorian Government

The Victorian Early Years Strategic Plan 2014-2020 aims to improve outcomes and better support for all Victorian children from pregnancy up to eight years of age with a focus across three areas:

1. Supporting parents and communities to give children a great start
2. Early and sustained support for those who need it most
3. All children benefiting from high-quality early learning

This Plan aims to strengthen the responsiveness of the early childhood sector and promote a seamless learning experience for children across early childhood and school to improve children's outcomes. Its key initiatives include:

- Linking children's learning from birth to primary school
- Growing parents and community capacity to support children's development
- Expanding the reach and value of the Maternal and Child Health Service
- Implementing an early years parenting strategy
- Strengthening local planning
- Improving engagement of children in out-of-home care with early childhood services
- Promoting speech and language as the foundation for later literacy

The Education State - Early Childhood Consultation Paper (August 2015) proposes five areas of reform to build on. These are:

1. Earlier engagement in learning
2. Boosting educational quality
3. Providing more support for parents
4. Providing more support for vulnerable children and families
5. Better connections between services

Colac Otway/Corangamite Child & Family Services Alliance

This Alliance has a common agenda to improve the safety, stability and well-being of vulnerable children, young people and their families through strong partnerships and collaborative effort that identifies and responds to community need.

It consists of a number of early years services including Colac Otway Shire, Corangamite Shire, Colac Area Health, Department of Health and Human Services, Barwon Child Youth & Family, ChildFIRST and Child Protection.

The key project areas identified are earlier intervention into the support of vulnerable families and various initiatives to reduce the incidence family violence.

The Alliance is currently seeking support to commence a project that will develop an Early Years Village Accord. This Accord aims to unify a public statement that outlines the impact that violence against women and their children has on our community and the important role that Early Childhood Services must play in providing an earlier intervention response to the problem.

Advancing Country Towns - Better Early Years and Family Services project

The Final Report of *Advancing Country Towns - Better Early Years and Family Services* project (funded by Regional Development Victoria) in July 2015 made a number of recommendations around:

- Governance and community leadership
- Infrastructure
- Addressing vulnerability
- An integrated service system framework
- Communication and information
- Best Practice pilot projects

Council's Role in Early Years Services

Council directly provides universal services such as Maternal and Child Health, Family Day Care and immunisation services. In 2014/2015 there were 3467 maternal and child health consultations; 116 families, with 173 children, used Family Day Care; and over 200 infants received immunisation courses. In 2013/2014 there were 147 vulnerable families who received Enhanced Maternal and Child Health Services.

There are a number of facilities and services that Council manages which have broad target groups that are also used by families and children such as respite services in the Home and Community Care Program and the National Disability Insurance Scheme.

Council also provides and maintains libraries, fitness and leisure centres and services, paths and retail centres, and parks and playgrounds which are used by families in multiple ways.

It is important that Council considers and enhances 'child friendly' aspects and opportunities to ensure these areas are welcoming, stimulating and safe for children. Festivals, events and entertainment, relevant to young children and their families, are important for developmental and cultural identity.



Draft Colac Otway Shire - Early Years Plan 2015 - 2017

Planning for facilities improvement

There are enough early years settings to cater for the current population of children and kindergarten placements yet the infrastructure is ageing and there is a need to better cater for universal, primary, and secondary services within these settings.



Facility Use Overview

There are many facilities in the Shire which house single or multiple early years services. These include kindergartens and schools, maternal and child health centres, health services, community health centres, halls, churches and family day care homes.

The overall impression of many of kindergartens, and maternal and child health centres is that they are ageing, which requires ongoing maintenance and renewal. In many cases these ageing facilities provide for universal services but fail to provide opportunities for secondary service providers (see Appendix A which lists these services available within Colac Otway).

Since Council's previous early years plan there has been an effort, with the support of State Government capital funding, by private and community operators, cluster managers and local government to improve and expand facilities. Examples include Apex Preschool Centre, Birregurra Preschool Centre, Millville Childcare Centre and Wydinia Kindergarten & Occasional Child Care Centre. However, the opportunity to provide for other universal and secondary services within these facilities was not fully taken in some.

There remain a number of early years facilities in the Shire that require considerable service and structural renewal to meet contemporary standards and services needed by our communities.

Council is working together with Colac Area Health and BCYF on a number of opportunities to improve current facilities within Colac through ongoing facility renewal and the scoping of an Early Years Hub and/or other facilities that will cater for local and visiting early years specialists. Similar opportunities are also being discussed throughout other areas of the Shire.

ACT – Better Early Years and Family Services Final Summary Report (July 2015)

- There are enough early years settings in Colac to cater for the population of children and kindergarten placements yet the infrastructure is ageing and in some cases does not provide for the new child/teacher ratios which change in 2016.
- Currently most early years settings are not set-up to have visiting secondary services.
- There is no united position across agencies as to the mix of Early Years infrastructure in Colac, their locations and the capacity to provide universal, primary, and secondary services. There needs to be clear consensus and direction on the development of an Early Years Hub or Shop Front or other facilities that best serve Colac family needs. (Note: BCYF has recently provided a room that caters for some of this need at their Bromfield Street office).
- Council's previous Early Years Plan identifies need for different services to be set-up in different areas.
- Council's 2050 Plan is currently being prepared. It is looking at future social infrastructure needs, including those for early years services, to cater for future growth.
- Funding is currently available to support infrastructure.

Children's Centres

Children's Centres are a widely utilised strategy for facilitating access to coordinated health, parenting, early learning and referral services.

Children's Centres are among the most promising models for improving access to health and social care for families with young children, and there is emerging evidence that when appropriate outreach and engagement strategies are in place, they increase service access by vulnerable families. There are also indications that the antenatal and perinatal period are windows of opportunity for service engagement.

In addition to providing integrated health, parenting and learning services, they provide a clear point of contact for families and provide a non-stigmatising point of access to information and support.



Opportunities for facility rationalisation and improvements

Over the last few years Council has reviewed its maternal and child health facilities in a number of locations due to lack of usage. These centres include Beech Forest, Cressy, Gellibrand and Swan Marsh which are no longer used. Families from these districts are still able to access close-by centres such as Lavers Hill, Beeac and Colac.

Kindergartens and childcare centres operate throughout the Shire. Council owned centres include Colac East, Winifred Nance and Wydinia in Colac and the Apollo Bay Preschool and Children's Services Centre. With support from BCYF (cluster manager) an extension and fit out of Wydinia in 2015 occurred which included an extensive storage room, a meeting room/office and an accessible toilet. Colac East is in the phase of planning for a redevelopment which should provide a meeting room for specialist services and an enhanced kitchen, storage and office. Winifred Nance has undergone minor renovations but requires further improvements to increase functionality.

Discussions are occurring on the feasibility of developing an integrated children's services centre at the Apollo Bay P-12 School to replace the Apollo Bay Preschool and Children's Services Centre.

Forrest Primary School is the site for multiple early years services which currently meet local needs. Whilst Lavers Hill K-12 School has recently received State funding to relocate its kindergarten service within the main school building.

The opportunity for population growth in Birregurra has been enhanced with the sewerage of the town. There are dedicated facilities within town, including a recently extended kindergarten, a soon to be upgraded primary school and a relatively new community health centre, which has dedicated space for childcare services. These facilities should provide a good basis for out of which current and new early years services could be provided to meet the needs of a growing population.



Brand new storeroom at Wydinia Kindergarten





Facts & figures

Colac Otway Shire has a total population size of around 21,000 people. 8.8% (or 1,835 residents) of the Shire's population is aged 0-6 years. This compares to 6.4% for Victoria.

- Id Profile estimates that the early year's population (0-6 years) will increase from 1835 in 2014 to 1965 in 2036. This is an increase of 7%. However, the G21 *Regional Growth Plan* projects growth may be greater than Id Profile estimates and indicates that Colac will reach 20,000 by 2050. This is an increase of 62%, which equates to 1,777 children aged 0-6 years.
- According to the SEIFA index of socio-economic disadvantage, Colac Otway Shire is the 19th most disadvantaged of the 80 municipalities in Victoria. Colac East is the least advantaged community whilst Elliminyt is the most advantaged within Colac Otway. The median weekly household income in Colac Otway is \$914, significantly lower than the amount for Victoria of \$1,216.
- The proportion of lone parent families living in the Shire is increasing. Many of the lone parents are young females aged under 24 years. A significant number are aged 15-19 years.
- Colac's teen pregnancy rate is amongst the highest in the state.
- Compared to other local government areas in the G21 region, Colac Otway has the smallest proportion of families with children aged 0-8 years who have an internet connection at home.
- A lower proportion of babies are fully breastfed at 6 months compared to other local government areas in the G21 Region.
- Colac Otway had a lower level of participation in the Maternal & Child Health key ages and stages assessments for 3.5 year olds compared to Barwon/South West and Victoria overall.
- There has been a 340% increase in reports of family violence in Colac Otway Shire between 2010 and 2015.
- Children starting school in Colac Otway are, in a number of ways, less prepared and significantly more developmentally vulnerable than similarly aged children within Victoria and Australia (see page 12 and 13 for further information).
- The early years facilities in the Shire have sufficient capacity to meet current demand. However, the target group populations for preschool and the M&CH service will increase across the Shire and in all local areas.
- There are a number of ageing early years facilities which require ongoing maintenance and improvements to meet current standards and support to ensure they can provide integrated services to meet local demands.
- There has been a push for some time for the development of an integrated children's and family services centre in Colac.

Area	SEIFA Index	Ranking in Victoria in order of disadvantage (out of 1520)	Ranking in Colac Otway Shire in order of disadvantage
Colac East	642	2	1
Beeac	890	67	2
Colac	919	115	3
Forrest	940	174	4
Gellibrand	950	210	5
Cressy	970	308	6
Beech Forest	983	397	7
Apollo Bay	984	406	8
Aye River	1009	608	9
Swan Marsh	1013	651	10
Colac West	1014	664	11
Birregurra	1024	760	12
Elliminyt	1029	819	13

Mapping childhood development



The Australian Early Development Census (AEDC) (formerly AEDI) compares the level of development of prep year students across Australian communities. The Index measures five developmental areas (called domains):

Physical health and wellbeing

Language and cognitive skills

Social competence

Emotional maturity

Communication skills and general knowledge

- Colac Otway performed significantly better in 2012 than it did in 2009 in all the development areas/domains with the exception of emotional maturity, communication skills and general knowledge.
- Between 2007 and 2012 the results for Colac, Elliminyt and North Colac/Beeac improved significantly in most domains. However, the results for Apollo Bay and Birregurra/Bungador declined in most domains.
- Compared to Victoria and Australia children within Colac Otway start school with greater vulnerability across two or more domains.
- Compared to the 2012 Victorian and Australian AEDC results Colac Otway prep children were equal to or better in the areas of social competence and language and cognitive skills; but were more developmentally vulnerable in the physical health and wellbeing, emotional maturity, and communication skills and general knowledge domains.
 - ⇒ Physical health and wellbeing vulnerability means sometimes being unprepared for school by being inappropriately dressed, and coming to school hungry or tired. Other sub-domains include a lack of physical independence, coordination and/or established hand preference.
 - ⇒ Emotional maturity vulnerability means does not show helping or social behavior, is anxious and fearful, shows aggressive behavior, and is hyperactive and inattentive.
 - ⇒ Communication skills and general knowledge vulnerability means ineffective communication, difficulty in participating in games involving language, difficult to understand and/or difficulty to understand others and may show little general knowledge.

This table provides AEDC results by geographic regions in Colac Otway Shire

Domain	% vulnerability									
	Apollo Bay		Birregurra/ Bungadore		Colac		Elliminyt		North Colac/ Beeac	
	2007	2012	2007	2012	2007	2012	2007	2012	2007	2012
Physical health & wellbeing	26.9	18.2	5.6	8.1	17.6	10.6	18.5	2.1	5.7	7.1
Social competence	3.8	15.2	0	8.1	16.0	9.7	18.5	2.1	2.9	3.6
emotional maturity	11.5	18.2	0	5.4	13.7	14.2	7.4	0	5.7	3.6
Language / cognitive skills	7.7	3.0	5.6	5.4	9.2	5.3	11.1	6.3	5.7	0
Communication skills / general knowledge	15.4	15.2	5.6	2.7	14.5	15.9	18.5	12.5	2.9	14.4
Vulnerable in one or more	26.9	33.3	11.1	10.8	35.1	28.3	29.6	14.6	14.3	14.3
Vulnerable in two or more	19.2	15.2	5.6	10.8	17.6	15.9	14.8	8.3	5.7	7.1

This table is a comparison comparing Colac Otway to Victoria and Australia

Domain	Colac Otway		Victoria		Australia	
	% vulnerable		% vulnerable		% vulnerable	
	2009	2012	2009	2012	2009	2012
Physical health & wellbeing	10.8	9.3	7.7	7.8	9.3	9.3
Social competence	13.3	8.1	8.4	8.1	9.5	9.3
Emotional maturity	7.1	9.7	8.3	7.2	8.9	7.6
Language/cognitive skills	5.0	4.6	6.1	6.1	8.9	6.8
Communication skills/ general knowledge	12.0	13.1	8.3	8.0	9.2	9.0
Vulnerable in one or more domains	23.7	22.4	20.3	19.5	23.6	22.0
Vulnerable in two or more domains	12.9	12.7	10.0	9.5	11.8	10.8

What do you say?

As part of the *Advancing Country Towns 'Better Services Early Years and Families' project 2012-2015* focus groups were held with seven groups of parents with children ranging in age from under 12 months to primary school age over a period of 6 weeks. These parents included parents of children with a disability or developmental delay and parents with a CALD background. In total 38 parents attended the focus groups. In addition surveys were also sent to committee members of the cluster managed kindergartens. See *Ganly N. (August 2014) Advancing Country Towns Program, Early Years Services Project Report* for full details of these consultations.

Positive themes emerging from the consultations were that:

- Parents obtain their information from a range of sources including other parents, the internet, and Facebook, however for new parents Maternal Child Health nurses were the main source of information.
- Most parents had positive experiences with services that they had accessed and thought that services in Colac were relatively easy to access except for long waiting times to see a paediatrician and a waiting list for public speech pathology.
- Parents liked the small town feel of Colac and felt that people knew each other and that made information exchange easier.
- Parents all considered it important to have their children immunised.

In 2013 Council's Maternal & Child Health nurses consulted with 273 people attending open and individual sessions. Further to these consultations were focus groups attended by 19 mothers and a questionnaire completed by 97 parents. Key findings were around phone reminders for appointments; further professional support; breastfeeding and sleep settling support; and social activities. Many of these recommendations have been implemented.



Your suggestions

How we acted

Most people said they would prefer a text or reminder phone call for Maternal Child & Health Services

"I use this with the hairdressers and dentist and it's great"

MCH User Survey 2013



We are now sending text message reminders for all Maternal Child & Health appointments

Most people would like a sleep settling and breastfeeding clinic in Colac

"Definitely would support - we have been to Terang"

MCH User Survey 2013



We now have a Maternal and Child Health Nurse with lactation consultant qualifications and experience to provide advice, support and equipment for mothers

Most people would like more social activities

"Great for new parents in Colac to meet new people"

MCH User Survey 2013



We will continue to run a number of new parent groups each year

Most people would like to see other visiting health professionals located at the Maternal & Child Health Centre

"Any extra health professionals is always a bonus"

MCH User Survey 2013



We now have a number of additional health professionals at the Queen Street Maternal & Child Health Centre including postnatal depression support and infant physiotherapy

The Ganly report identified through consultation the need for

"An early years shop front in Colac"

Advancing Country Towns Better Services Early Years and Families project 2012



Barwon Child Youth & Family now have breastfeeding and change facilities at their Centre in Bromfield Street Colac

What do the early years providers say?



Service providers within the local universal, secondary and tertiary early years support sector were asked to provide feedback on issues that affected their services. See Appendix A which shows these services. (Advancing Country Towns "Better Services Early Years and Families" project 2012 – 2015). Key themes were around information about services, and processes and procedures.

Provision of information about services

- Providing information to the community and possible referral services was achieved by Colac Otway Shire website, Early Years Directory & brochures
- The KEYS network meetings in Colac provide early years professionals a chance to exchange information
- Schools keep up to date with service information through email from school support officer

Processes and Procedures

- The Colac Otway/Corangamite Child FIRST Alliance governs the Child FIRST service
- Specialist School Early Education Program - involves other professionals in planning for family e.g. therapists, schools, kindergartens at transition times

Colac Schools

- A very small percentage of families each year arrive at school without having any other early childhood educational experience
- The main issues facing families with young children are lack of parenting skills/capacity to manage children's behaviours

Maternal and Child Health

- The session for new mothers on child care is very popular
- There is only a team of three nurses to cover a large area. There is concern about families that don't attend any services

Specialist School

- Main issues for parents are whether their child will cope with mainstream school



Referral Pathways into the service

- Most referrals to Child FIRST come from schools, Child Protection, and M&CH
- CAH Allied Health practitioners see children referred through the kindergarten screening program

Navigation of referral pathways

- Sometimes difficult to access services that come from Geelong but local referral pathways are relatively easy
- Access to pediatricians is very difficult - can be up to 6 months wait
- We usually don't get any feedback from services after we have referred

How can service co-ordination in Colac be improved

- Everyone needs to have a clear understanding of the needs of children and the need to support families in a consistent manner
- Information sharing is difficult
- Better Communication - Kindergartens should be in the feedback loop

Valuing children in Colac

- The Shire could have a greater focus on providing programs and supports for children and young people
- We need to develop a children's charter
- Children's services value children, however, we believe the community as a whole can benefit from having a better understanding of valuing children





Vision, principles and goals

Vision:

A seamless early years service system built around the wellbeing and development of children and the common needs of families

Principles:

Child centred, strengths based and family focused practice

Best interests of the Child

Integration and collaboration with other service providers

Community inclusion and respect for cultural diversity

Promotion of community connectedness for families

Evidenced based, quality service provision

No wrong door approach

Goal 1 Deliver high quality services that are tailored to meet local community needs

Goal 2 Create an integrated early years service

Goal 3 Implement Best Practice initiatives that focus on the needs of our children and families

Goal 4 Plan for improving early years facilities throughout the Shire

Goal 5 Develop earlier interventions to support vulnerable young families

Action plan

Goal 1: Deliver high quality services that are tailored to meet local community needs

Strategies	Partners	Indicators
Promote early years services from antenatal to 6 years of age	ACT & Alliance members	Introduce products and opportunities to communicate with and involve expecting mothers, parents, relatives and the broader community
Addressing vulnerability	ACT & Alliance members	Develop and implement integrated approaches to reduce the vulnerability of children and families
Ensure our community understands and plays a key role in supporting children in their 0-6 years.	ACT members	Develop an informed Committee of Leaders group to understand and support identified priorities, planning and resourcing strategies to support vulnerable children being ready for School
Build 'evidence ready' systems and use evidence to guide investment decisions and service provision	Council ACT & Alliance	<ul style="list-style-type: none"> • Comparison of the 2015 AEDC data to previous years • Identify areas for future investment through early years planning

Goal 2: Create an integrated early years service

Strategies	Partners	Indicators
Commitment of early years' service providers to an Integrated Service System Framework for Universal, Secondary and Tertiary early years services (Appendix A)	ACT & Alliance members KEYS network members GP's	Governance structures are developed and committed to by early years services providers
Plan for key transitions in a early years to support each child's development	ACT & Alliance members KEYS network members DET	<ul style="list-style-type: none"> Strengthened links between major intake points of services that support early years and young families Identify an agreed planning and communication tool to be used between early years services and primary school
Ensure that early years and other services that support young families are trained in and use Patchwork	Council Alliance	Increase in the number of families entered into Patchwork
Provide integrated education and training for early years professionals	Council – F&CS KEYS network members Alliance	<ul style="list-style-type: none"> Calendar of Professional Development for 2016 is completed Attendee numbers



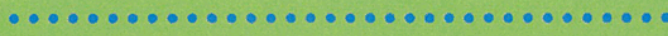
Action plan

Goal 3: Implement Best Practice initiatives that focus on the needs of our children and families

Strategies	Partners	Indicators
Implement the 'Let's Read' program	Alliance ACT KEYS networks members	<ul style="list-style-type: none"> Number of books distributed Improvements from evidence based data (e.g. AEDC)
BabyFAST	ACT BCYF	<ul style="list-style-type: none"> Partnership formed with other National FAST teams as a Victorian arm of the program Facilitate BabyFAST programs in Colac
Support the implementation of Bush Group & Bush Kinder	BCYF	<ul style="list-style-type: none"> Develop capacity to support the development of Bush Group & Bush Kinder Number of Bush Group & Bush Kinder
Implement the most appropriate communication and information strategy for parents and guardians	ACT COS – M&CH	<ul style="list-style-type: none"> Funding accessed for the rollout of the CHEWS App. Strategy Improved access to services M&CH to identify further improvement in SMS communications

Goal 4: Plan for improving early years facilities throughout the Shire

Strategies	Partners	Indicators
Consider and plan for early years facilities within the Colac 2050 Plan	Council (lead) with State government agencies including RDV, VicRoads, DEWLP	Early years facilities are included in the Colac 2050 Plan
Work with key organisations and state government agencies to identify the most suitable early years hub model for Colac	COS, CAH, BCYF, DET, kindergartens,	<ul style="list-style-type: none"> Develop a scope in which to investigate and plan for an early years hub in Colac Agreed outcomes for an early years hub or alternative
Work with key early years service providers, schools and state government to identify the most appropriate early years facilities for local communities	COS, DET early years and schools within Apollo Bay, Birregurra, Forrest and Lavers Hill	Meetings with all communities to further discussions on the needs of future early years services and facilities
Plan for ,and when possible, implement early years facility improvements	COS, BCYF, CAH, OH, DET, Kindergarten committees, Schools	Develop an ongoing commitment and protocol to review and plan for early years facilities that meet community needs
Plan for the provision of outreach and visiting services at Maternal and Child Health and early years centres	COS, BCYF, CAH, OH, DET, Kindergarten committees	Meet with other service early years services to map possible outreach services within each community



Action plan

Goal 5: Develop earlier interventions to support vulnerable young families

Strategies	Partners	Indicators
Conduct events for the community on early years parenting	COS Parenting Resource Service	Events are held for parents, family members and professionals
Work with vulnerable families at the earliest possible stage	COS – M&CH Alliance	<ul style="list-style-type: none"> • Commencement of Early Years Worker to support M&CH nurses • Measure engagement and participation in M&CH service by KAS and enhanced data
Promote gender equity and equal and respectful relationships	COS – Social Policy G21 Health & Wellbeing Pillar DET	Develop programmes for attitudinal and behavioural change in demonstrating respectful and non-violent gender relationships
Identify and focus on earlier interventions that enhance early childhood development	Alliance ACT KEYS networks members	Document strategies, partnerships, measurements and outcomes
Work with vulnerable families at the earliest possible stage	COS– M&CH Alliance	Increase the number of family violence checks performed at the 4 week KAS consultation and other KAS assessments
Improving engagement of children in out-of-home care with early childhood services	COS– M&CH	Collect data and information around the needs of carers and children in out-of-home care programmes

References & acknowledgements

References

1. Victoria State Government - Department of Education & Training (August 2015) *The Education State, Early Childhood Consultation Paper*
2. Garly N. (August 2014) *Advancing Country Towns Program, Early Years Services Project Report*
3. K2 Planning. (August 2014) *Advancing Country Towns, Colac Early Years and Family Services Logic Mapping Report*
4. Colac Otway Shire - Maternal and Child Health Services (2013) *Client Survey Report*
5. Fox, S., Southwell, A., Stafford, N., Goodhue, R., Jackson, D. and Smith, C. (2015), *Better Systems, Better Chances: A Review of Research and Practice for Prevention and Early Intervention*. Canberra: Australian Research Alliance for Children and Youth (ARACY)
6. Colac Otway Shire *Municipal Public Health and Wellbeing Plan 2013-2017*
7. Colac Otway Shire *Council Plan 2013-2017*
8. Fernon, A. (2014) *Colac Otway Shire, Early Years Issues and Facilities Report 2015-2025*.
9. Victoria State Government - Department of Education and Early Childhood Development (March 2014), *Early Years Strategic Plan - Improving outcomes for all Victorian children 2014-2020*
10. Victoria State Government - Department of Health & Human Services (September 2015), *Victorian public health and wellbeing plan 2015-2019*.
11. Australian Early Years Development Census, www.aedc.org.au
12. Victoria State Government - *Victoria's Vulnerable Children, Our Shared Responsibility, Strategy 2013-2022*

Acknowledgements

The direction of this plan was made possible by the commitment and passion from a number of organisations and their representatives whose focus is the wellbeing and development of young children. Realising that this can only be achieved with informed and engaged parents and the community.

Acknowledgement and recognition goes out to local schools, kindergartens and early years service providers and in particular the following who were committed to the success of the Advancing Country Towns - Better Early Years and Family Services project:

Regional Development Victoria - Jacqui Beck & Deb Kearney

Department of Health & Human Services - Tracey Rodger, Lauryn McGaw & Deb Kearney

Colac Area Health - Kay Widdicombe & Ruth Payne

Colac Otway Shire - Greg Fletcher & Sharyn Ryan

Barwon Child Youth & Family - Anneliese Knell, Barb Hayes & Kim Coulter

Department of Education & Training - Andrea Smith, Amy McCauliff & Karri Flood

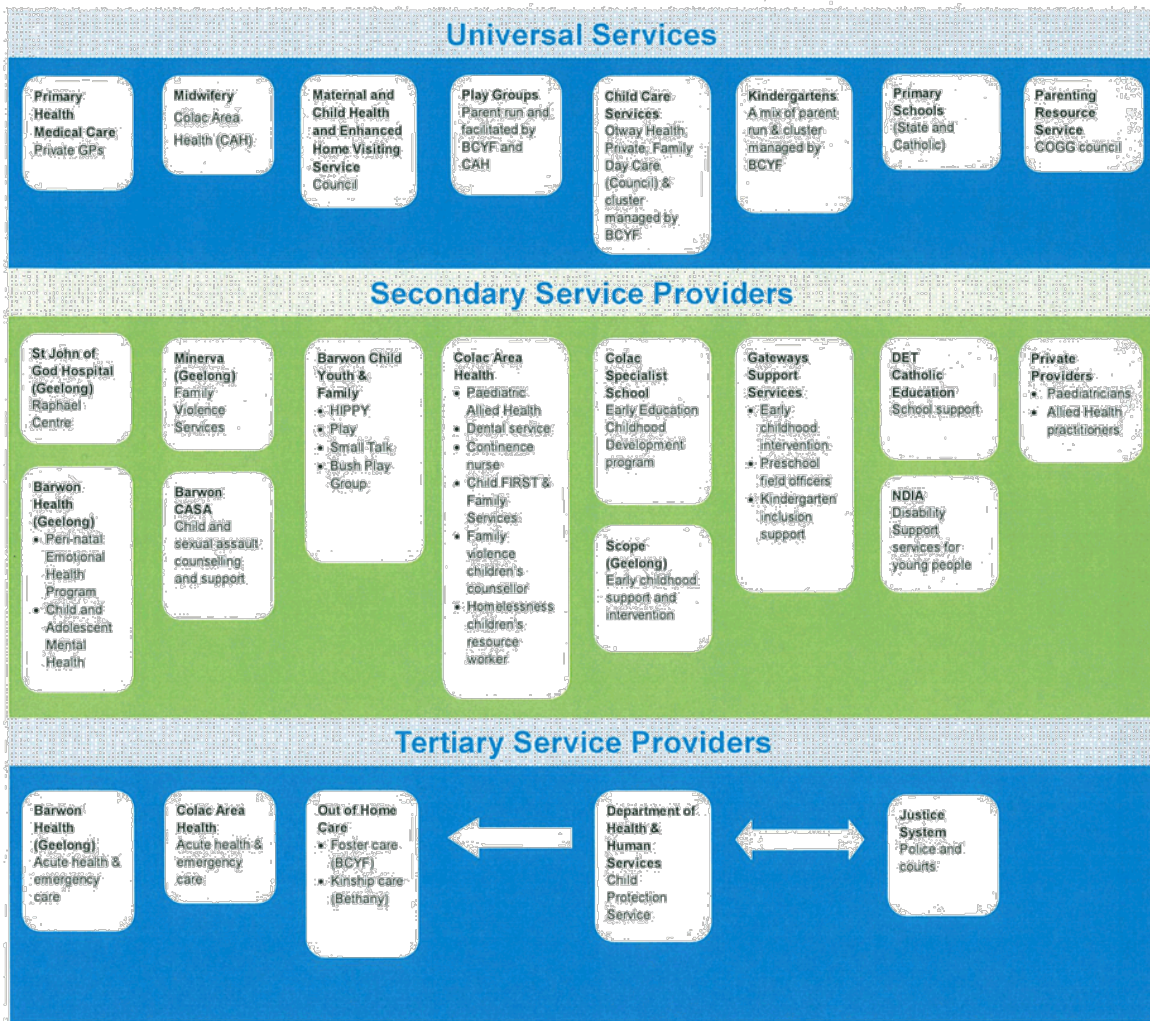
Primary Health Network (Western Vic.) - Jacinta Bourke
Children's Resource Worker - Karen Glenman

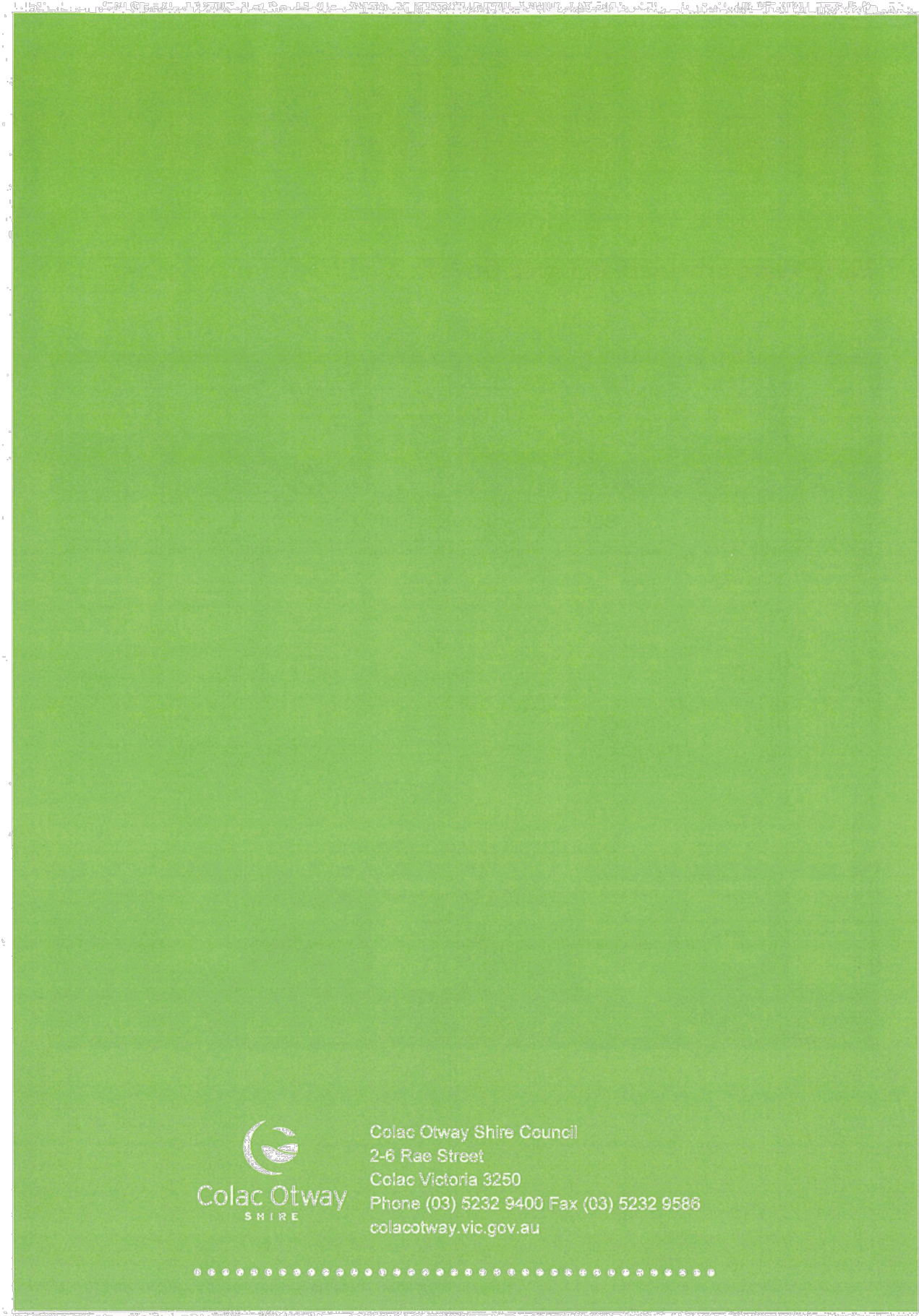
Glossary

ACT	Advancing Country Towns
AEDC	Australian Early Development Census
AEDI	Australian Early Development Index
Alliance	Colac Otway and Corangamite Child and Family Service Alliance
Baby FAST	Baby - Families and Schools Together
BCYF	Barwon Child Youth & Family
CAH	Colac Area Health
CALD	Culturally and Linguistically Diverse
CHEWS	Colac Health Education Wellbeing Services
COS	Colac Otway Shire
DELWP	Department of Environment, Land, Water & Planning
DET	Department of Education & Training
F&CS	Family & Children's Services (COS)
GP's	General Practitioners
K-12	Kindergarten to Year 12
KAS	Key Ages and Stages (M&CH Service)
KEYS	Kids Early Years Services
M&CH	Maternal and Child Health
P-12	Prep Grade to Year 12
SEIFA	Socio-Economic Indexes for Areas
SMS	Short Message (or Messaging) Service

Appendix A

Early Years providers in Colac Otway





Colac Otway Shire Council
2-6 Rae Street
Colac Victoria 3250
Phone (03) 5232 9400 Fax (03) 5232 9586
colacotway.vic.gov.au

